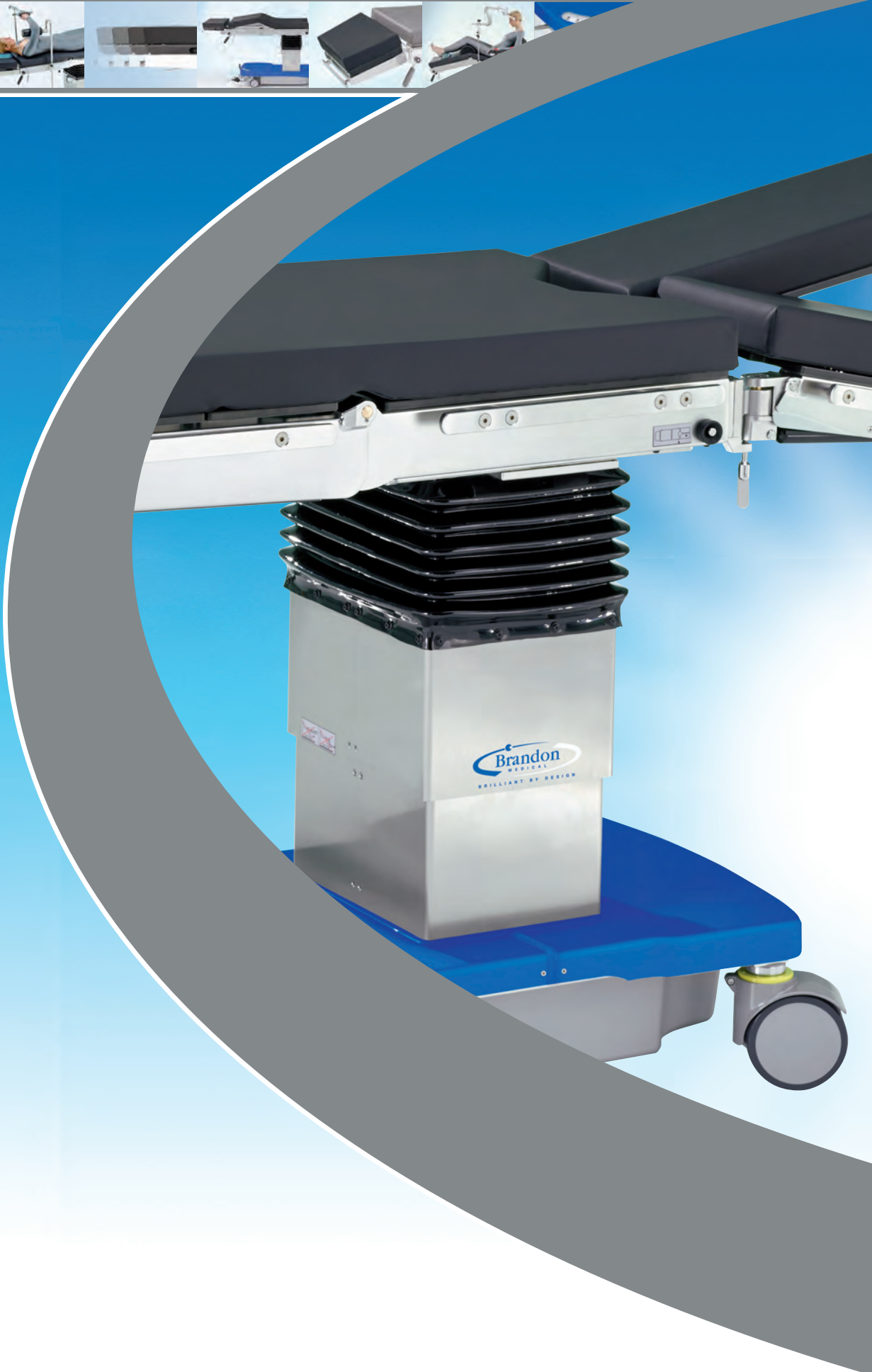


Anteris®

Hydraulic Operating Tables



Anteris® Key Features at a Glance



X-ray Cassette Access

Continuous rails for X-ray cassette insertion.

Memory Foam Pads

Prevents pressure ulcers and provides maximum patient comfort.

Disinfection-proof Gel Strips

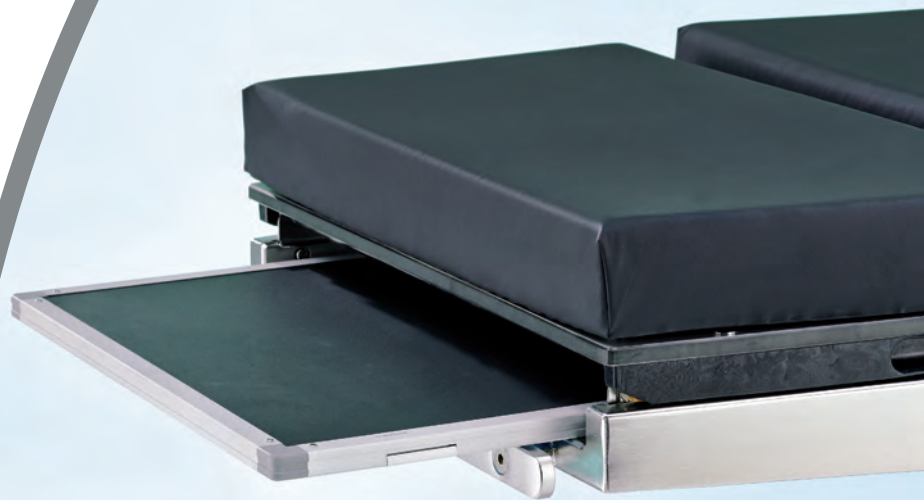
Adhesive gel strips are easily sterilised, maintaining hygiene standards without constant replacement.

250kg Weight Capacity

An increased weight bearing capacity makes the Anteris® table suitable for the vast majority of patients.

Quickly Removable Head and Leg Plates

One-button removal and attachment of head and leg plates makes for simple patient positioning in reverse mode.





Covered Castors

Castors have protective splash caps to encourage hygienic practice.

Choice of 2 or 3 Hydraulic Movements

Anteris® 02 provides hydraulic movements of High/Low and Trendelenburg/Reverse Trendelenburg positionings. Anteris® 03 provides the same positioning, plus lateral (left/right) tilt.

Longitudinal Shift (optional)

Flexibility in positioning of the table top, either to the left or right, allows for all operational procedures.

Kidney Bridge (optional)

Lifting 100mm from the bed, the unique Kidney Bridge caters for a variety of procedures.



Anteris® Model Selection



Hydraulic Movements

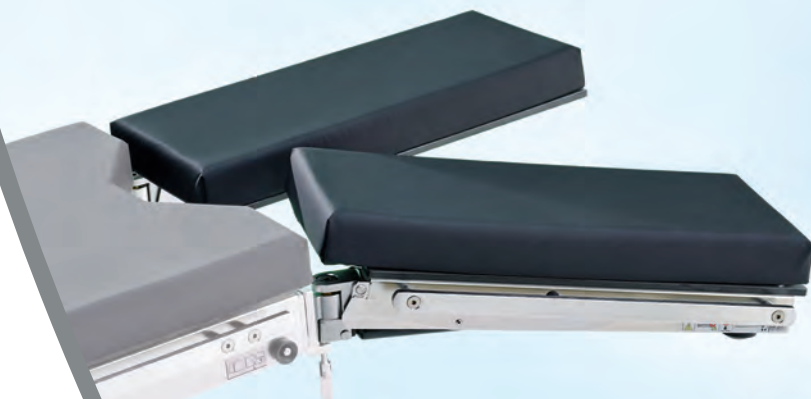
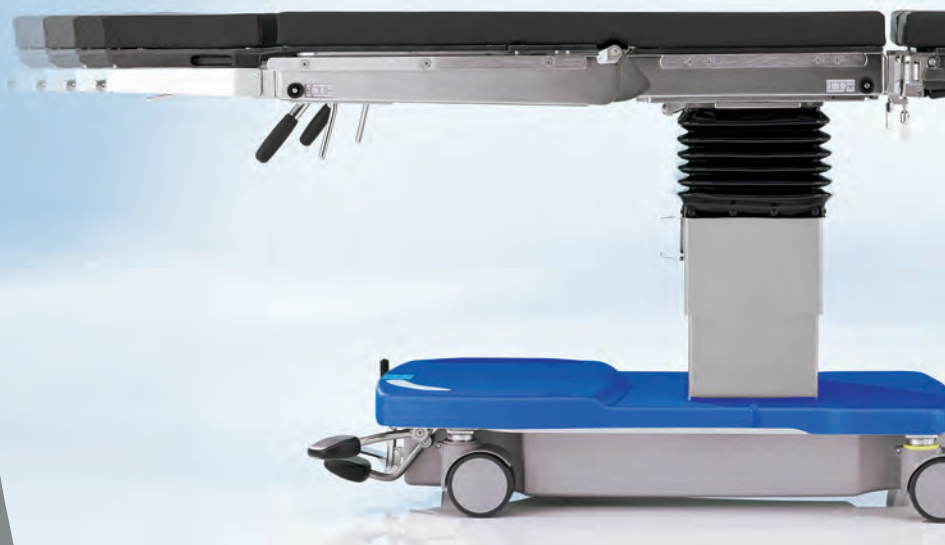
Anteris® 02 Models

Two hydraulic adjustments:

- Height (Up/Down)
- Trendelenburg and Reverse Trendelenburg

Anteris® 03 Models

Anteris® 03 has an additional hydraulic adjustment of lateral tilt.





Choose Head Selection

Mono Head Rest

Servo-assisted one-hand tilting.

Duo Head Rest

Double-adjustment, servo-assisted weight compensation.

Choose Options

Base Model - B

Base Operating Table with 2 or 3 hydraulic movements.

Kidney Bridge - K

Operating Table with 2 or 3 hydraulic movements & Kidney Bridge.

Longitudinal Shift - L (Anteris® 03 Only)

Operating Table with 3 hydraulic movements & Longitudinal Shift.

Integrated (both) - I (Anteris® 03 Only)

Operating Table with 3 hydraulic movements with Integrated Kidney Bridge and Longitudinal Shift.



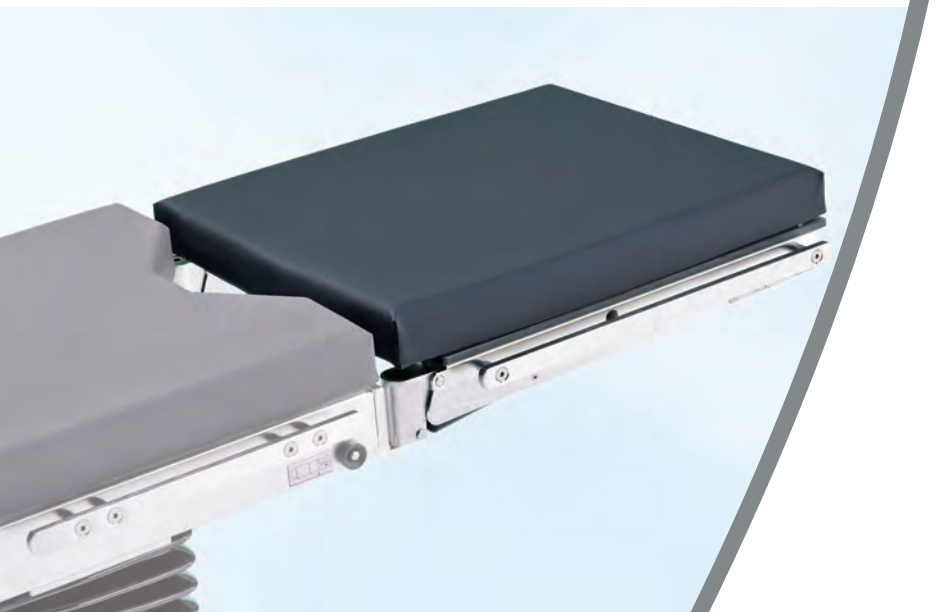
Choose Single or Double Leg Section

Single Leg Section

One-piece leg section, servo-assisted tilting.

Double Leg Section

Manual swivelling and servo-assisted tilting with weight compensation.



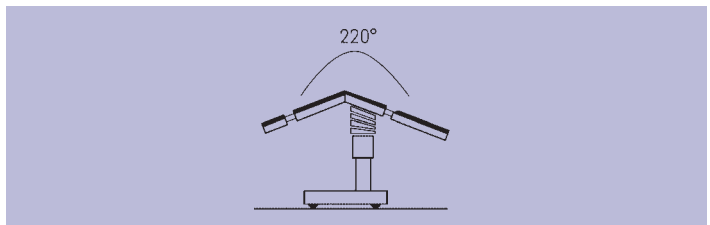
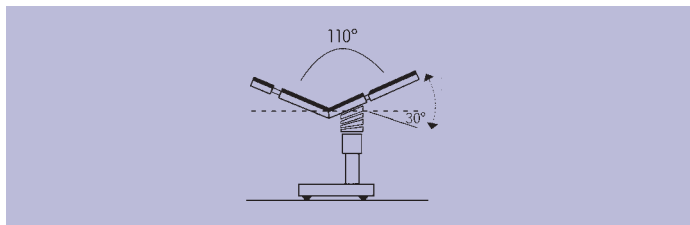
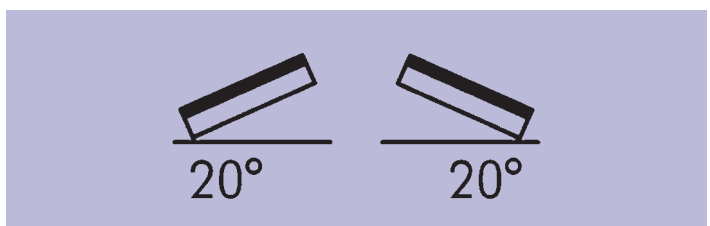
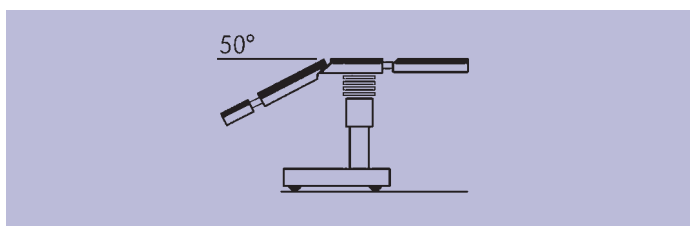
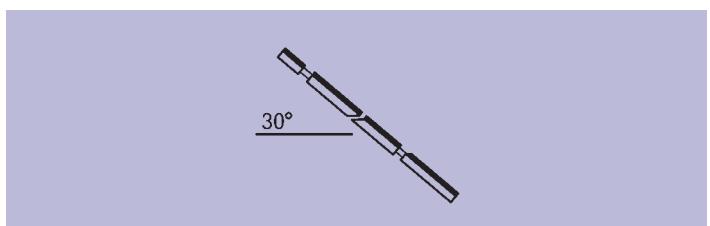
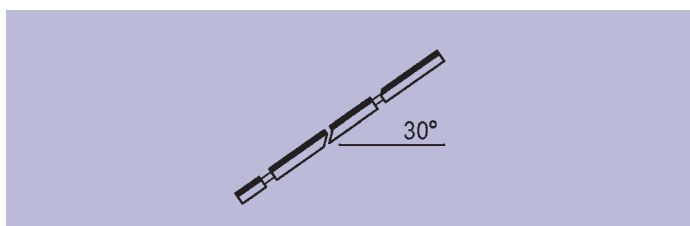
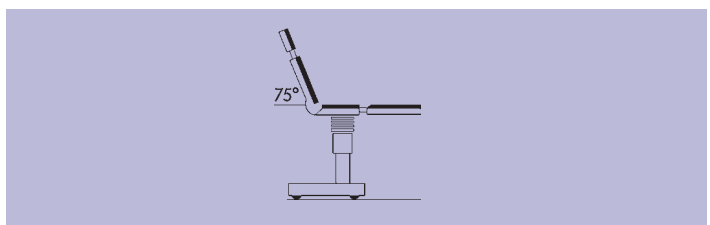
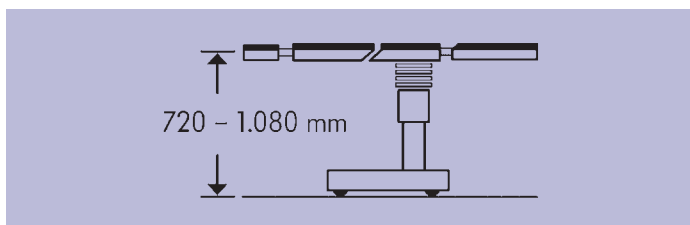
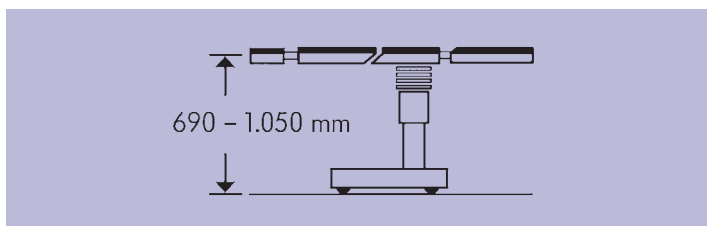
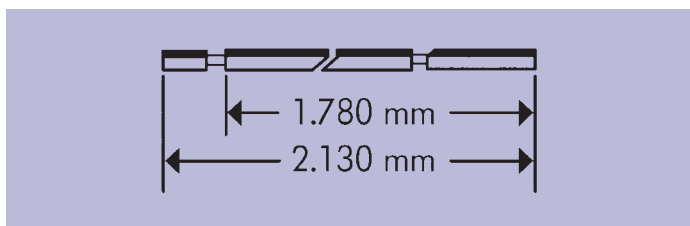
Anteris® Technical Data



	02 02K	03 03K	03L 03I
Overall length w/o head and leg sections	1,140mm	1,140mm	1,140mm
Overall length w/o head rest, with leg section	1,780mm	1,780mm	1,780mm
Overall length with head and leg sections	2,130mm	2,130mm	2,130mm
Width of table top	540mm	540mm	540mm
Total width	590mm	590mm	590mm
Base plate (length x width)	all models: 1,120 x 580mm		
Diameter of the castors	125mm	125mm	125mm
Height adjustment range (w/o pads)	690mm - 1,050mm	690 mm - 1,050mm	720mm - 1,080mm
Trendelenburg	30°	30°	30°
Reverse Trendelenburg	30°	30°	30°
Lateral adjustment (L/R)	-	+/- 20°	+/- 20°
Longitudinal displacement	-	-	
Back section	+ 70/- 50°	+ 70/- 50°	+ 70/- 50°
Leg plate(s)	+ 20/- 90°	+ 20/- 90°	+ 20/- 90°
Swivelling of leg plate	55°	55°	55°
Head rest	+ 30/- 45°	+ 30/- 45°	+ 30/- 45°
Tilt of head section pad	25°	25°	25°
Net weight incl. head and leg sections	160kg	180kg	190kg
Weight capacity*: Max. static load (up to) Safe working load (up to)	250kg 185kg	250kg 185kg	250kg 185kg



Product Name	Description	Part No. for Ordering
Anteris 02B	Base Operating table with 2 hydraulic movements	ANTERIS 02B
Anteris 02K	Operating table with 2 hydraulic movements & Kidney Bridge	ANTERIS 02K
Anteris 03B	Base Operating table with 3 hydraulic movements	ANTERIS 03B
Anteris 03K	Operating table with 3 hydraulic movements & Kidney Bridge	ANTERIS 03K
Anteris 03L	Operating table with 3 hydraulic movements & Longitudinal Shift	ANTERIS 03L
Anteris 03I	Operating table with 3 hydraulic movements & with Integrated Kidney Bridge and Longitudinal Shift	ANTERIS 03I



Anteris® Positions



Kidney and thoracic surgery



Nailing of the upper arm



Laparoscopy



Neurosurgery



Arthroscopy



Urology



Neurosurgery



Gynaecology



MIS/Gynaecology



Spinal surgery



MIS/Cholecystectomy



ENT/Gynaecology



Shoulder surgery



Struma



Vascular surgery/ERCP



Gall bladder surgery



Fracture of neck of femur



Vascular surgery



Femoral shaft fracture



Tibial shaft fracture



UK Customs
Approved Exporter
Status GB 16164/13



Anteris® Accessory Kits



General Surgery

2x	MA10125801	Head section
	MA10121701	Leg section
	MA10100190	Arm rest
	MA10101230	Wristlet
	MA10101770	Body restraint strap
	MA10100120	Anaesthetic frame
	MA10101110	Anaesthetic frame extension

Gynaecology

	MA10125801	Head section
	MA10121701	Leg section
2x	MA10101150	Leg support (Goepel type)
2x	MA10101460	Attachment clamp
	MA10100190	Arm rest
	MA10101230	Wristlet
	MA10100120	Anaesthetic frame
	MA10101110	Anaesthetic frame extension

Minimal invasive surgery/ Laparoscopy

	MA10125801	Head section
	MA10121701	Leg section
	MA10100190	Arm rest
	MA10101230	Wristlet
2x	MA10101640	Leg restraint strap
	MA10100120	Anaesthetic frame
	MA10101110	Anaesthetic frame extension
2x	MA10101150	Leg support (Goepel type)
2x	MA10101460	Attachment clamp

Urology

	MA10125801	Head section
	MA10121701	Leg section
	MA10160101	Urology adapter
	MA10101820	Deep drain basin
	MA10101910	TUR Sieve
	MA10160200	Pair of elbow rests
2x	MA10101150	Leg support (Goepel type)
2x	MA10101460	Attachment clamp
	MA10100190	Arm rest
	MA10101230	Wristlet
	MA10100120	Anaesthetic frame
	MA10101110	Anaesthetic frame extension

Kidney and Thorax surgery

	Anteris	I models
	MA10125900	Head section
	MA10121701	Leg section
	MA10102030	Semi-circular cushion
3x	MA10101210	Bracket for body supports
2x	MA10101620	Back/buttock support
	MA10101750	Pubis/sacrum/sternum support
2x	MA10101920	Arm rest
	MA10101770	Body restraint strap
	MA10100120	Anaesthetic frame
	MA10101110	Anaesthetic frame extension

ENT

	Table model without gyn. cutout Variant 1	
	MA10125801	Head section
	MA10121801	Leg section
	Variant 2 - Reverse-Mode Positioning	
	MA10101550	Shaped head rest or
	MA10101790	Shaped head rest
	MA10101670	Connecting piece or
	MA10101870	Connecting piece
	MA10127801	Shoulder plate
	additionally, for both variants	
2x	MA10100190	Arm rest
	MA10101770	Body restraint strap
	optionally	
	MA10164000	Foot control (RC models only)

Ophthalmology

	Patient positioning in reverse mode L table model without gyn. cutout	
	MA10121801	Leg section
	MA10100190	Arm rest
	MA10127801	Shoulder plate
	alternatively	
	MA10127200	Universal adaptor
	MA10101120	Supporting arm
	MA10101790	Shaped head rest
	optionally	
	MA10164000	Foot control RC models only

Rectum surgery

	Variant 1 in lithotomy position	
	MA10125801	Head section
2x	MA10101150	Leg support (Goepel type)
2x	MA10101460	Attachment clamp
2x	MA10100190	Arm rest
	MA10100100	Pair of shoulder supports
	Variant 2 in prone position	
	MA10125801	Head section
	MA10121701	Leg supports with gyn. cutout
2x	MA10100190	Arm rest
	MA10120701	Knee/foot rest
	MA10101780	Rectoscopy/Buttocks support
2x	MA10101460	Attachment clamp
	MA10100120	Anaesthetic frame

Adiposity surgery

	Anteris 40 model	
	MA10125801	Head section
	MA10121701	Leg section
	as an alternative for the leg section	
2x	MA10101150	Leg support (Goepel type)
2x	MA10101460	Attachment clamp
	MA10101940	Extension plates (two-part set)
	MA10102000	Extension plates (two-part set)
2x	MA10100190	Arm rest
	MA10120701	Knee/foot rest or
	MA10102020	Foot rest (pair)
	MA10100100	Pair of shoulder supports
2x	MA10101640	Leg restraint strap



Traumatology (fracture treatment of the lower limbs)

Table model without gyn. cutout

MA10125801	Head section
MA10102700	Extension device with basic accessories: 2x extension bar supports 2x foot plates for adults 2x traction boots for adults 1x countertraction post for dorsal position
MA10103500	1 Countertraction post for lateral position
MA10152500	Mounting for extension device (except L-models)
MA10102510	Mounting arbor
MA10101380	Pad
MA10102900 or MA10102210	Transport trolley
MA10102180	Transfer leg plates (pair)
MA10100190	Arm rest
MA10100120	Anaesthetic frame
MA10101370	Wristlet

Fractures of the femur and neck of the femur, additional access

MA10101150	Leg support (Goepel type)
MA10101460	Attachment clamp
MA10101930	Side rail extension

Neurosurgery

MA10127801	Shoulder arthroscopy plate
MA10121701	Leg section
MA10101130	Doro Skull clamp adaptor
MA10101420	Doro Universal basic unit
MA10101270	Doro-Skull-Clamp
alternatively	
MA10101560	Doro shaped head rest
MA10100140	Cross-bar attachment
MA10127200	Universal adaptor
2x MA10100180	Attachment clamp
MA10100190	Arm rest

Traumatology (fracture treatment of the upper arm)

MA10125801	Head section
MA10121701	Leg section
MA10101360	Upper arm positioning device
MA10101460	Attachment clamp
MA10101520	Counteraction post for upper arm
MA10101460	Attachment clamp
MA10101630	Weinberger hand traction device
MA10101220	Upper arm positioning plate
MA10101170	Attachment clamp
MA10100190	Wristlet
MA10101770	Body restraint strap

Vascular surgery

Anteris 40 L	
MA10125801	Head section
MA10121701	Leg section
2x MA10100190	Arm rest
as an alternative for MA10121701	
MA10171510	Carbon plate
MA10171530	Extension for carbon plate
2x MA10171520	Side rail for carbon plate

Shoulder arthroscopy

MA10127901	Shoulder arthroscopy plate
MA10121701	Leg section
MA10100130	Head support
MA10101670	Connecting piece
2x MA10100190	Arm rest
MA10101770	Body restraint strap

Fractures of the lower legs, additional access

MA10102800	Positioning device for the lower leg
MA10101150	Leg support (Goepel type)
MA10101460	Attachment clamp
MA10101930	Side rail extension
MA10101650	Kirschner wire device

Spinal surgery

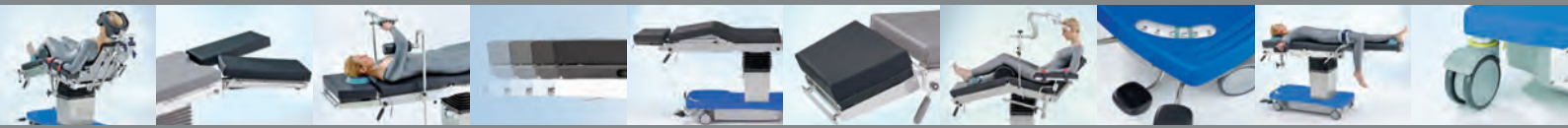
MA10125801	Head section
MA10121701	Leg section
as an option	
MA10120701	Knee/foot rest
MA10101780	Buttocks support
2x MA10101460	Attachment clamp
MA10100150	Cushion for prone position
2x MA10100190	Arm rest
MA10100120	Anaesthetic frame

Knee arthroscopy

MA10125801	Head section
MA10121701	Leg section
MA10102120	Knee arthroscopy positioning device
MA10101460	Attachment clamp
alternatively	
MA10105830	Knee arthroscopy positioning device
MA10101640	Leg restraint strap
MA10100190	Arm rest
MA10100120	Anaesthetic frame
MA10101230	Wristlet

Arm/Hand surgery

MA10125801	Head section
MA10121701	Leg section
MA10100701	Arm/hand operating table
as an alternative for MA10100701	
MA10101080	Arm/hand operating table (radiolucent CFRP board)
MA10100190	Arm rest
MA10101770	Body restraint strap
MA10100120	Anaesthetic frame



Anteris® operating table and accessories are part of the Brandon Equipment Package.

Operating Theatre Lights and Battery Back Up

Minor Surgical Lights

Examination Lights

Theatre Control Panels

PACS Workstations

IPS Isolated Power Systems

UPS Uninterruptible Power Systems

Medical Gas Pendants and Accessories

Ultra Clean Ventilation Canopies

Digital Audio Video Solutions

Brandon Medical Co Ltd, Elmfield Road, Morley, Leeds, LS27 0EL

T: +44 (0)845 1243 666 F: +44 (0)845 1243 667

T: +44 (0)113 2777 393 F: +44 (0)113 2728 844

E: enquiries@brandon-medical.com

www.brandon-medical.com